

FREQUENTLY ASKED QUESTIONS

What counties are located in the Komen Quad Cities service area?

The Komen Quad Cities' service area is comprised of 8 counties: Cedar, Clinton, Muscatine and Scott Counties in Iowa and Henry, Mercer, Rock Island and Whiteside Counties in Illinois.

Who is eligible to apply for a Komen Quad Cities grant?

Non-profit organizations that serve all or part of our 8-county service area are eligible to apply for a Komen Quad Cities grant. Organizations may include clinics, schools, universities, hospitals, government agencies, religious organizations, charities or associations. All applicants must meet the following requirements in order to be eligible for funding:

- All past and current Komen-funded grants or awards to applicant are up-to-date and in compliance with Komen requirements
- Applicant has tax exempt status under the Internal Revenue Service code
- Project must be specific to breast health and/or breast cancer
- If applicant, or any of its key employees, directors, officers or agents is convicted of fraud or a crime involving any other financial or administrative impropriety, then applicant is not eligible to apply for a grant during this current cycle and will not be eligible to apply for a new grant until the later of 12 months after the conviction or until applicant can demonstrate that appropriate remedial measures have been taken to ensure that any criminal misconduct does not recur

What is the Grants eManagement System (GeMS)?

GeMS is a grantmaking tool, which allows grantees to manage their entire grant application online. It can be accessed at <https://affiliategrants.komen.org>.

How many applications can one organization submit?

An organization may submit **ONE** application per legal entity.

For clarification, one organization may not apply for multiple grants (e.g. one grant for screening, one for diagnostic, one for treatment support). However, a larger healthcare system may apply for multiple grants if they are to be awarded to different legal entities (e.g. a major healthcare system submitting three separate applications for three separate legal entities within the Komen Quad Cities service area).

What is the maximum amount an organization can request for funding?

There is no limit to the amount an organization can request for funding.

What are direct-care services?

- Clinical Breast Exam
- Screening Mammogram
- Diagnostic Mammogram
- Ultrasound
- MRI
- Biopsy
- Cyst Aspiration
- Fine Needle Aspiration
- Core Biopsy
- Excisional Biopsy
- Pathology Fee
- Surgical Consultation
- Office Visit

What are equipment costs?

Equipment costs cover items such as technical machines, desks, laptops and computer software. These items should be included in the budget **ONLY** if they will be used exclusively on this project.

What can funds not be used for?

Funds may **not** be used for the following purposes:

- Medical or scientific research
- Construction or renovation of facilities
- Political campaigns or lobbying
- Endowments
- General operating funds (except indirect cost)
- Debt reduction
- Annual fundraising campaigns
- Event sponsorships
- Projects completed before the date of grant approval
- Building/renovation
- Capital campaigns
- Employee matching gifts
- Land acquisition
- Program-related investments/loans
- Scholarships
- Education regarding breast self-exams and/or use of breast models
- Thermography

What expenses are considered indirect costs?

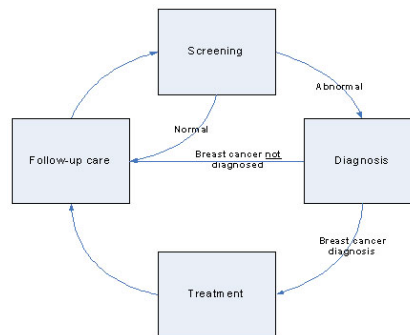
- Accounting or bookkeeping services
- Telephone and internet access charges, including cell phones and long distance charges, DSL, cable, or dial-up internet access
- Rent, utilities and facility maintenance
- Fundraising expenses
- Marketing expenses (unless the marketing expense is directly related to the project that Komen Quad Cities would fund)
- Salary for an executive director or program director unless he or she directly and regularly participates in the project in more than a general oversight function
- General purpose office supplies, computer equipment and software (unless directly related to the project)

What is the definition of “medically underserved?”

Medically underserved refers to people who are uninsured, underinsured, lack access to medical care, or are at-risk. Examples of medically underserved may, depending on the circumstances, be racial or ethnic minorities, people of lower socio-economic status, or residents of a rural area. Please detail how the population served by the grant project is medically underserved. - NCI, July 2009 <http://crchd.cancer.gov/pnp/concept.html>

What is the breast cancer continuum of care?

The breast cancer continuum of care (CoC) represents the process by which a woman should move through the health care system, from breast cancer screening through follow-up care. There are four stages within the continuum: screening, diagnosis, treatment and follow-up care.



Does Komen Quad Cities provide ongoing funding for its grantees?

No. All grantees must reapply for funding each year. Funding from Komen Quad Cities is never guaranteed and should not be expected by any prior or future applicant. Although many of our grantees have received a grant award for more than one grant cycle, these organizations are never guaranteed continued funding.

How does Komen Quad Cities make its funding decisions?

Komen Quad Cities’ grantmaking process is independent, rigorous and competitive. An independent Community Review Panel evaluates all applicants and makes grant awards in accordance with a predetermined process that takes many factors into consideration. Board members then vote only on grants as a slate, never individually.

Can our organization appeal a grant decision?

No. All grantmaking decisions are final. After being denied, all applicants are welcome to reapply for a grant during the following year’s grantmaking cycle.

Our organization is paying a consultant \$1,500 to write our grant application. Can this cost be included in the budget?

No. Komen Quad Cities will consider only costs related to the execution of a breast health and/or breast cancer project.

What happens if we are late in reporting?

Failure to submit satisfactory reports by the deadline will affect the organization’s future funding.